

Cruiser^{series}

MajesticFlagstore.com 618-969-9444

One of the popular portable extractors on the market. Constructed with heavy duty fiber composite body, stainless steel lid. Tough, durable and easy to maintain. (Long life in the rental business)

SOFT SURFACE

Manufacturer of commercial & environmental cleaning equipment

© 2011 TIMBUCKTOO MFG, INC.

Specifications: (C-105)

- ~ heavy duty fiber composite body
- ~ one 3 stage vacuum motor
- ~ 140" suction power (H₂O)
- ~ air flow 104 (cfm)
- ~ 100 psi pump
- ~ flow rate 1.8 (gpm)
- ~ 120 volt AC with 12 amperes (Max. 15 amp.)
- ~ 7 gallon solution tank and 6 gallon recovery tank
- ~ easy access to all mechanical components
- ~ exterior dimension H 25" x W 17" x L 25"
- ~ 15' vacuum hose & 15' solution hose
- ~ one 25' 12-3 cord
- ~ 2/3" non-marking swivel casters
- ~ 2/8" rear wheels
- ~ stainless steel lid
- ~ 1 jet 12" Auto-Seal Wand
(Patented heavy duty self adjustable suction angle head with adjustable stainless steel grip handle)
- ~ shipping weight 80 lb. +

Options:

- ~ from 60 to 500 psi pump
- ~ out-put-female plug
- ~ 25' 12-3 cord (use in less amp. model)
- ~ GFCI (ground fault circuit interrupter)
- ~ force venting system
- ~ acoustic muffling system
- ~ hour meter
- ~ Auto-Seal See Through Wand
- ~ Auto-Seal Double Bend Wand
- ~ Auto-Seal See Through Double Bend Wand
- ~ other type of tools and accessories available
- ~ electric tank heater with pre-set thermostat 🔥
- ~ electric instant water heater (pressure up to 500psi) 🔥

picture shown with optional electric instant water heater with stainless steel wand



picture shown with 15' vac hose, 15' sol hose. single jet 12" Auto-Seal Wand with adjustable stainless steel grip handle. optional 10" rear wheel. (please call for more information)



NOTE: * some options may not be used with standard specifications.
* hose length can be added 5 ft. increments up to 50 ft. per length.

standard color: blue, red, grey
CAUTION: Do not use flammable and volatile material.

Cruiser

Series

Owner's Manual
Portable Heavy Duty Extractor



Manufacturer of commercial & environmental cleaning equipment

caution

When the machine is delivered

Check the carton and machine carefully for signs of rough handling. If the unit is damaged, notify the carrier immediately and request an inspection. Be sure to keep the carton, packing inserts, packing list and carrier's receipt until the inspector has verified your claim.

General precautions

Make sure the machine is plugged into an electrical outlet with the same voltage as shown on the unit. When plugging in a **two cable machine**, each should be into a **separate circuit**, when this is accomplished a "Green Light" will turn on in the dash panel. Push switch on dash panel above green bulb, if two circuits are accomplished the bulb will light up. No light, keep looking for two circuits.

Warning

- This machine was designed for carpet, floor and upholstery applications as per instructions and recommendations written in this manual. Any deviation from its proper use or purpose and the consequential damage that may occur is the sole responsibility of end user.
- Do not use volatile substances such as gasoline, kerosene, or any petroleum base solvent in the machine or anywhere near the cleaning area. The use and presence of such materials could cause an explosion and fire.
- Do not expose machine to extreme temperatures.
- Do not attempt repair of machine see your authorized service dealer.
- Do not use unauthorized replacement parts.

This machine was tested before shipping and in most cases some water or anti freeze might remain in the plumbing system, we suggest flushing it out before using it. Make sure to use antifreeze for storage if you are located in extreme cold weather.

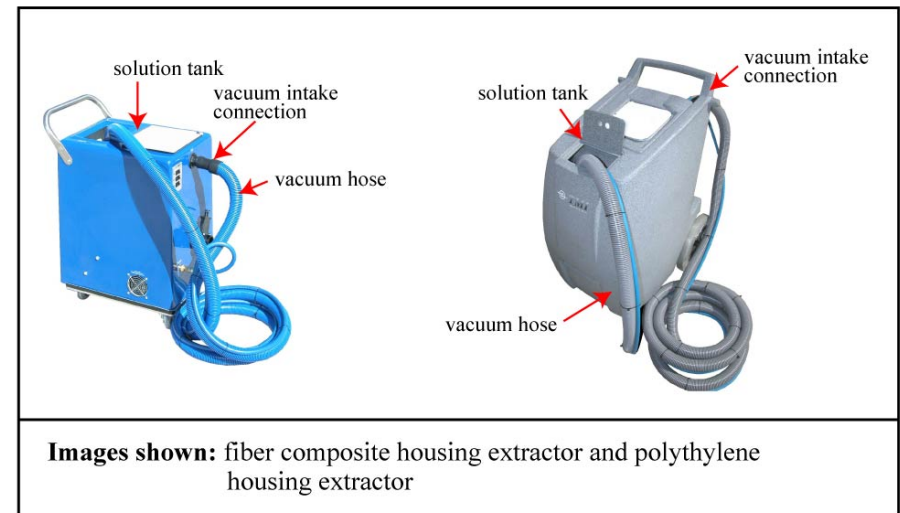
This machine is being shipped with protective plastic wrap over the wheels and/or casters. Please remove the plastic wrap before use. Using the unit without removing the protective plastic wrap may cause a jam or even lock up the wheels or casters. (see below)



how to (empty the solution tank)

This procedure applies to most TMI EXTRACTORS

- Step 1:** to remove remaining water from solution tank; disconnect vacuum hose and solution hose from tool, such as Wand or Hand tool, or any other tool. (see below images)
- Step 2:** bring disconnected vacuum hose and insert it into solution tank. (see below images) Caution with components inside the solution tank.
- Step 3:** turn vacuum motor switches on and vacuum out all the excess water from solution tank. (see below images)



Vacuum System		
Problem	Possible Cause	How to Repair
Vacuum motor on, little or no vacuum or suction to head (wand/upholstery tool)	1. Lid is not closed 2. Drain valve not closed 3. Hose or wand clogged 4. Accumulated dirt on the filter and ball float cage 5. Worn out lid gasket 6. Lint and dirt build-up on wand 7. Damaged vacuum hose 8. Loose or no vacuum hose connection inside the machine 9. Lint accumulation in vacuum fans	1. Close the lid 2. Close the drain valve 3. Clean hoses and wand 4. Clean or replace the filter 5. Replace the gasket 6. Clean the wand 7. Replace 8. See authorized repair personnel 9. See authorized repair personnel
Vacuum motors run intermittently		See authorized repair personnel.
ETC.....		
Problem	Possible Cause	How to Repair
Water not pumping out	1. Machine not plugged in (or circuit breaker off) 2. Switch is not turned on (bad switch?) 3. The hose is not connected properly 4. Empty solution tank	1. Plug in working outlet 2. Turn the switch on. See authorized repair personnel for new switch 3. Connect hose properly 4. Fill the solution tank with water
Water or foam coming out from exhaust	1. Over foaming of water in recovery tank 2. Elbow fitting in recovery tank pointing wrong direction (i.e. pointed toward the ball-float cage) 3. No ball-float cage 4. Too much water in the recovery tank 5. Auto vac shut off system not working	1. Put defoamer in the recovery tank, or put it in the vacuum hose with vac motor running 2. Point elbow away from ball-float cage 3. Install ball-float cage with filter 4. Drain the recovery tank 5. See authorized repair personnel

DO NOT ATTEMPT TO REPAIR THE MACHINES, CONTACT AUTHORIZED REPAIR SHOP OR DEALER

Disconnect Power Cords from the outlet before doing any maintenance work

caution	1
table of contents	2
owner's warranty information	2
warranty	3
warranty registration card	4
safety instructions	6
machine overview	7
assembly	8
preventative maintenance	8
operating the extractor	9
caution 1 (filter)	10
accessories	11
trouble-shooting	12 & 13
how to empty the solution tank	14

owner's warranty information

Date of Purchase:

Serial Number:

Model Number:

Purchased From[Dealer name]:

Address:

City, State, Zip:

Telephone:

Keep for your own records

All equipment and accessories are thoroughly inspected and tested before leaving the factory. They are warranted to be free of defects from workmanship and material for one year from date of original purchase. (Proof of purchase is required)

LABOR = 90 days from initial purchases

PARTS = 1 year, excluding normal wear item's

THE FOLLOWING PROCEDURES MUST BE FOLLOWED TO OBTAIN PERFORMANCE OF WARRANTY:

IMPORTANT:

Should any trouble develop during this period, the owner must FIRST contact authorize dealer or distributor. TMI will provide with RETURN AUTHORIZATION NUMBER (RAN) to dealer or distributor. TMI WILL NOT ACCEPT products WITHOUT RAN NUMBER, and TMI WILL NOT OFFER WARRANTY WITHOUT RETURN AUTHORIZATION NUMBER (RAN).

You MUST return the item within 14 days, freight prepaid, to the factory after TMI has issued RETURN AUTHORIZATION NUMBER (RAN). If inspection shows the trouble to be caused by defective workmanship or material, the factory will repair (or at our option, replace) without charge. If it is determined to be a warrantable repair the freight back will be pre paid by the factory. NO CREDIT will be allowed for items returned as defective without the above mentioned (RAN) number and the DETERMINATION that it is DEFECTIVE.

Proof or purchase is necessary to establish the date of original sale. The proof of purchase should be the Registration & Receipt of "WARRANTY REGISTRATION CARD". It is extremely important to register your purchase by sending the card back within 10 days of purchase.

This warranty is in lieu of all other warranties expressed or implied and NO PERSON is AUTHORIZED TO GIVE ANY OTHER WARRANTY, ASSUME OBLIGATION OR LIABILITY ON THE FACTORY'S BEHALF.

THIS WARRANTY IS VOID WHEN:

- Repairs have been made or attempted by others
- Repairs are required because of normal or natural wear and tear
- Items have been abused, misused or improperly maintained
- Modifications or alterations have been made to the equipment

LIMITATION OF REMEDY:

In no event shall seller be liable for any incidental, consequential or special damages of any kind or nature whatsoever. Including but not limited to lost profits arising from or in anyway connected with this agreement or items sold hereunder, whether alleged to arise from breach of contract, express or implied warranty, or in tort, including without limitation, negligence, failure to warn or strict liability.

ENTIRE AGREEMENT / GOVERNING LAW:

This agreement and warranty shall be governed in all respects by the law of the State of California. No actions arising out of the items sold hereunder or this Agreement may be brought by either party more than two (2) years after the cause of action occurs. All mediation or litigation will take place in the County of Los Angeles in California.

Electrical System		
Problem	Possible Cause	How to Repair
No electrical power	1. Check the outlet & the plug 2. Damaged cord 3. Circuit breaker off or fuse blown	1. Plug in properly 2. See authorized repair personnel 3. Flip circuit breaker on or replace fuse. Unplug other equipment using the same circuit. Make sure cords plugged into proper amp circuits.
Switch is turned on, power is intermittent to all motors	1. Faulty electrical cable 2. Defective switch 3. Loose terminal or corroded connector	1.to 3: See authorized repair personnel
Electric shock	1. Equipment not grounded	See authorized repair personnel
Pump System		
Problem	Possible Cause	How to Repair
Pump motor stopped	1. Pressure build - up 2. Thermal overload (overheated) 3. Damaged motor or rectifier 4. Pump switch defective 5. Loose wire connection 6. Pump pressure switch defective 7. Faulty motor	1. Release pressure by opening up (press) the lever on the wand 2. Turn off the pump and heater switch and wait 20 -30 minutes for the pump to cool down. 3. to 7: See authorized repair personnel
Loss of pump pressure with wand valve open and/or uneven or weak spray from the jet tips	1. Clogged or dirty spray- tip 2. Accumulated dirt in solution line 3. Dirty or clogged filters 4. Pump check valve worn or dirty 5. Malfunction in the wand valve 6. Hose quick connect bad or clogged with lint.	1. Clean jets and screens 2. Clean 3. Clean 4. to 6: See authorized repair personnel

accessories

Options / Accessories:



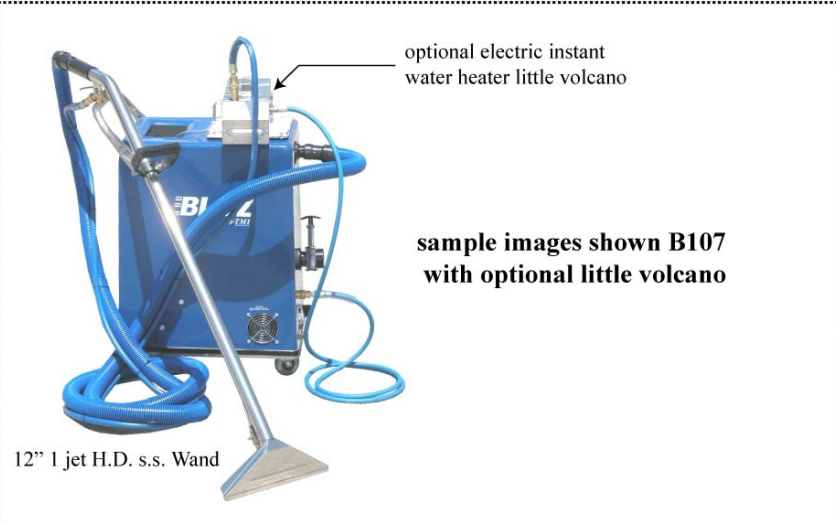
hose mender

hose mender with two vacuum hoses

adding extra length by using hose mender for vacuum hose



electric tank heater with pre-set thermostat

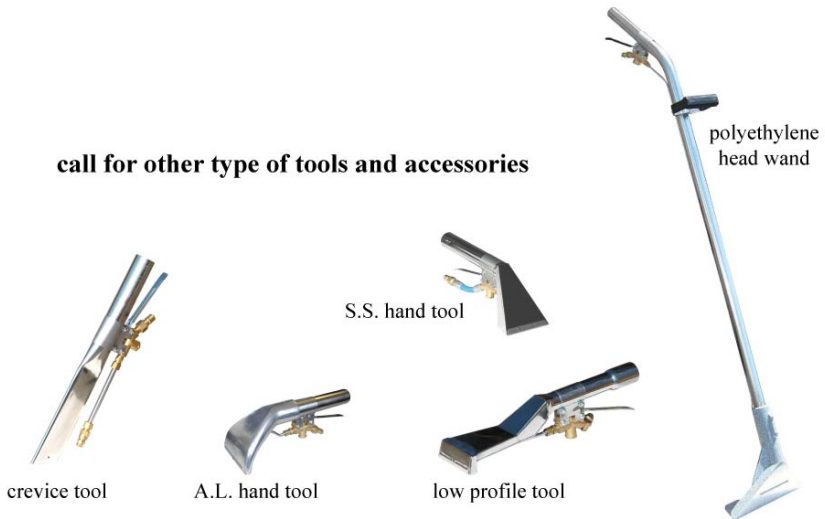


optional electric instant water heater little volcano

sample images shown B107 with optional little volcano

12" 1 jet H.D. s.s. Wand

call for other type of tools and accessories



crevice tool

A.L. hand tool

S.S. hand tool

low profile tool

polyethylene head wand

WARRANTY REGISTRATION

PLEASE PRINT OR TYPE

PURCHASED FROM:

ADDRESS:

DATE PURCHASED:

PURCHASER'S NAME:

ADDRESS:

TEL:()

MODEL NO:

SERIAL NO:

DEALER RECORDS

AUTHORIZED TMI CENTER WARRANTY REGISTRATION

PLEASE PRINT OR TYPE

DEALER:

ADDRESS:

DATE SOLD:

PURCHASER'S NAME:

ADDRESS:

TEL:()

MODEL NO:

SERIAL NO:

Signature:

Print Name:

PLEASE SIGN AND MAIL TO TMI WITHIN 10 DAYS FROM THE SALE DATE FOR VALID WARRANTY

caution 2

TMI
TIMBUCKTOO MFG., INC.

TMI
TIMBUCKTOO MFG., INC.

Mailing Address:

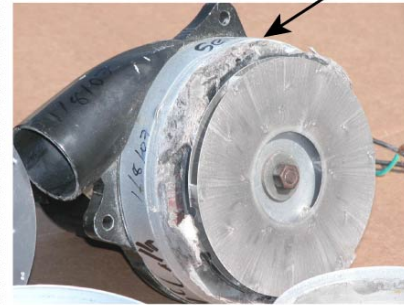
TMI

1633 W. 134th Street

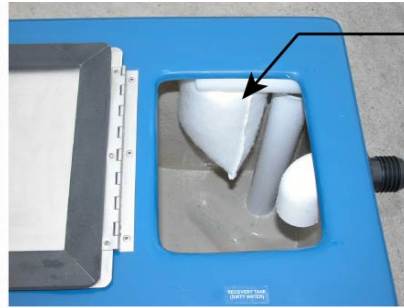
Gardena, CA 90249-2013

Vacuum Motor Filter

Make sure vacuum motor filter install in recovery tank ALL TIME to protect from damaging motor



serious damage to vacuum motor
cause by not using vacuum filter
in the recovery tank



vacuum motor filter over ball float
cage installed in recovery tank to
protect vacuum motor
(both fiber composite housing machine
& polyethylene housing extractor)

Pump Filter

Make sure pump filter install in solution tank ALL TIME to protect from damaging pump



pump filter installed in recovery
tank to protect pump

Read the manual carefully and completely before attempting to operate the unit. Make sure the unit is plugged into an electrical outlet with the same voltage as shown on the unit.

1. When plugging in a **two cables** machine; in (2)-**two distinct circuits must be used.**
A green light turns on the dash panel when this is accomplished.
If no Green Light-don't turn it on, look for two distinct circuits.
2. Always thoroughly vacuum the surface to be cleaned. Using an upright vacuum cleaner or the extractors dry vacuum with optional dry attachment.
3. Pre Vacuum the area to be cleaned with a dry vacuum cleaner or upright vacuum.
4. Recommended method of getting chemical to the floor is to **pre spray the cleaning area with recommended cleaning solution.**
This will give it dwell time to do it's job and result is a much cleaner floor.
5. We do not recommend putting chemical in machine tank. Fill solution tank with clean water (use cool water for wool).
6. Make sure drain valve is closed, drain hose is connect, and recovery tank lid is closed before turning on vacuum and pump switches. (If left open, there will be no suction)
This apply to only extractor has optional auto dump system.
7. **In case foam is detected in recovery tank and hose, use defoamer to prevent from damaging the vacuum motors.**
8. Continue cleaning until the clean water tank is empty and/or recovery tank is full (or until cleaning job is done). Turn off all the switches and disconnect power cord from power plug, then empty the recovery tank into bucket or other proper drain area.
9. To remove remaining water from clean water tank, disconnect the vacuum hose from wand and insert the vacuum hose into clean water tank. Vacuum out all the excess water. Drain and thoroughly clean the recovery tank.
At this point the tank can be rinsed while dumping.
10. The vacuum filter (wet filter) and ball float cage have to be rinsed and cleaned thoroughly when it's still wet. Wrap power cords around handle for storage. Do not use solution or recovery tanks for storage, machine can be damaged.

Consult you sales representative for more information on cleaning methods.

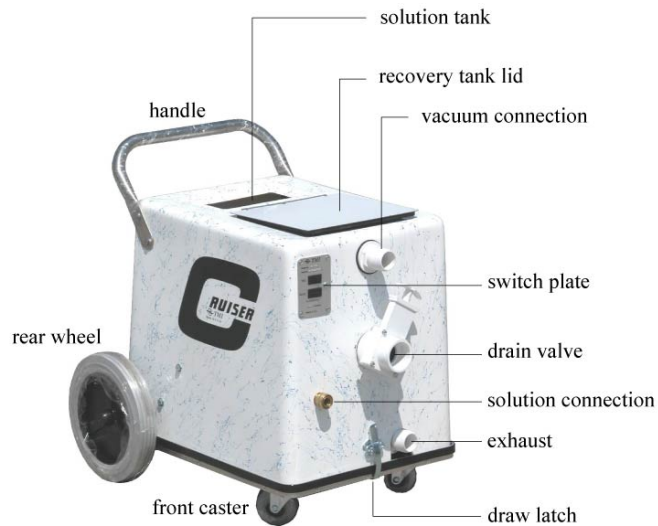
Read All Instructions Before Using This Machine

When using an electrical appliance, basic precautions should always be followed.

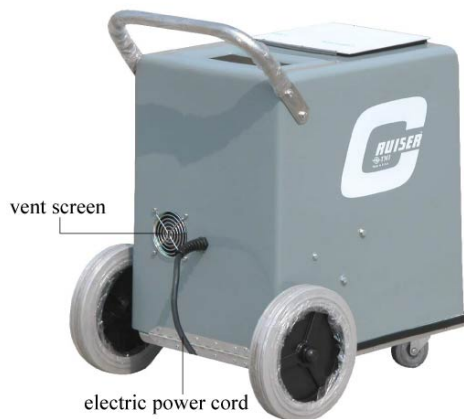
WARNING - To reduce the risk of fire, electric shock or injury:

1. Do not leave appliance plugged in. Unplug from outlet when not in use and before servicing.
2. **WARNING: ELECTRIC SHOCK COULD OCCUR IF USED OUTDOORS OR ON WET SURFACES.**
3. Do not allow to be used as a toy. Close attention is necessary when used by or near children.
4. Use only as described in this manual. Use only manufacturer's recommended parts.
5. Do not use with damaged cord or plug. If appliance is not working as it should, has been dropped, damaged, left outdoors or dropped into water, follow warranty instructions and contact an approved service center.
6. Do not pull or carry by cord, do not use cord as a handle, do not close a door on cord, or do not pull cord around sharp edges or corners. Do not run appliance over cord. Keep cord away from heated surfaces.
7. Do not unplug by pulling on cord. To unplug, grasp the plug, not the cord.
8. Do not handle plug or appliance with wet hands.
9. Do not put any object into openings. Do not use with any opening blocked; keep free of dust, lint, hair and anything that may reduce air flow.
10. Keep hair, loose clothing, fingers and all parts of body away from openings and moving parts.
11. Do not pick up anything that is burning or smoking, such as cigarettes, matches or hot ashes.
12. Do not use without filters in place.
13. Turn off all controls before unplugging.
14. Use extra care when cleaning on stairs.
15. Always wear safety equipment and appropriate clothing when operating extractor to protect from hot water.
16. Do not use to pick up flammable or combustible liquids such as gasoline or use in areas where they may be present.
17. Connect to a properly grounded outlet only.
18. Do not attempt to service the unit while appliance is plugged in.

machine overview

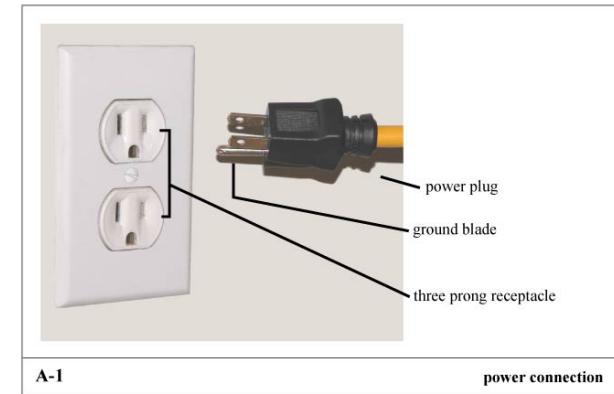


above image shown C-105 with private color



assembly

1. Connect vacuum hose to vacuum intake connection on the machine and the wand.
2. To protect the grounding plug; this plug is to be used only with proper grounding type (three prong) receptacle. Do not break off or pull out the grounding blade. (see A-1, P.8)



preventative maintenance

1. **Thoroughly clean all equipment and accessories after each use.**
 - a) **Rinse solution and vacuum tank with clean water.**
 - b) **Flush entire solution system with clean water. This includes all solution hoses and wand(s). Do not allow liquid with cleaning chemicals to remain in the equipment.**
 - c) Clean all filters.
2. Occasionally, lubricate all quick connects.(every 3 months)
3. Do not use the same pail to fill the solution tank that is used to empty the waste tank.

This would result in putting dirt and debris into the solution lines that can block filters, orifices, and generally degrade solution line systems.
4. Keep equipment out of extreme temperatures. (i.e. Freezing temperatures will make water expand, and will damage pump, fittings, valves, etc.)
5. **Turn off the machine when not in use. Especially, walking away from the machine and not using it for a while may build up pressure in the machine or heater. This can cause excessive pressure that is not good for the machine.**
6. Check for loose or frayed wires.